

Project Profile

Republic Engineered Products, Inc. Canton, OH

End Use:

Furnace and Caster Building

Client:

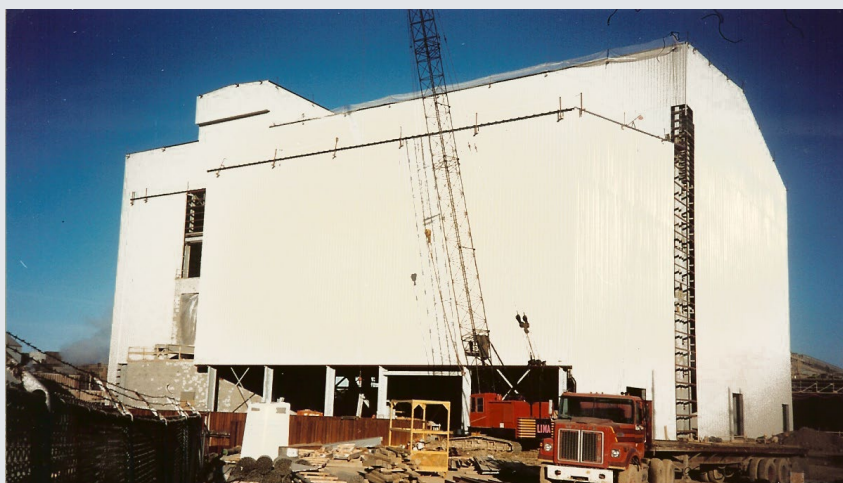
Republic Engineered Products, Inc.

Size:

155'x285'x125' Eave Hgt.

65'x200'x65' Eave Hgt.

80'x125'x45' Eave Hgt.



Heavy Structures supplied the structural design, building materials and erection for this expansion to the Republic Engineered Products facility in Canton, Ohio. Using fast-track design-build processes, the building was dried-in in only nine months.

The building houses four overhead cranes; one with a capacity of 325 tons, two with capacities of 75 tons each, and one carrying 12 tons. A crane maintenance penthouse services the three large cranes and supports a 26½ ton monorail hoist. Crane girders span from 44' to 66' and support the cranes at an elevation of 90' above finished floor. Building eave heights of 125' to 130' were required to provide clearance above the cranes.

The project required 1,800 tons of structural steel, including crane girders that weighed from 10 tons to 38 tons each. The crane girders were designed without splices, reducing the amount of erection time required. Erection services were provided through Heavy Structures. Restricted site conditions resulted in the steel being staged in an off-site lay-down area and brought in as-needed. The primary steel was erected in close coordination with the nearly concurrent construction of the caster foundations and furnace flume below.

